

PB Daintree



5600 BHP ASD Harbour & Escort Tug



General Information

Design	Damen 2411
Yard	Damen Shipyards, Hai Phong, Vietnam
Built	2010
Port of Registry, Flag	Brisbane, Australia
Call Sign	VJN3445
Official Number	859219
Classification Society	Lloyds
IMO No.	9530474
MMSI No.	503384100

Dimensions

Length Overall	24.47 m
Beam, Moulded	11.33 m
Max Operating Draft	5.40 m
GRT/NRT	250 mt/75 mt

Accommodation 3x2 = 6 berths

Fire Fighting FiFi ½

Machinery

Main Engines	2x Caterpillar 3516B
Horsepower	5600 BHP
Bollard Pull	68 mt
ASD Propellers	2x Rolls Royce US 255
Fore Winch	Ridderinkhof, split drum, 150 T brake
Line Pull	30 mt at 11 m/min
Drum Capacities	110m x 104mm tow line
Capstan	5 mt @ 15 m/min
Aft Towing Hook	Mampaey, 100 mt

Capacities & Performance

Fuel	74,800 litres
Potable Water	8,600 litres
Max Speed	12.5 knots

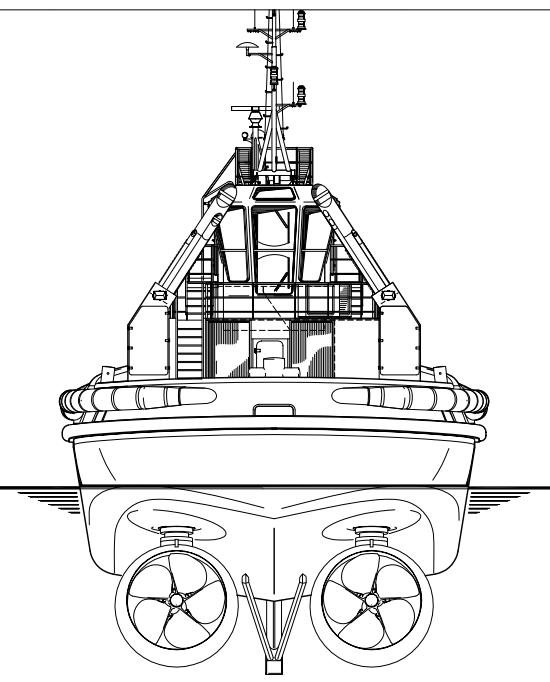
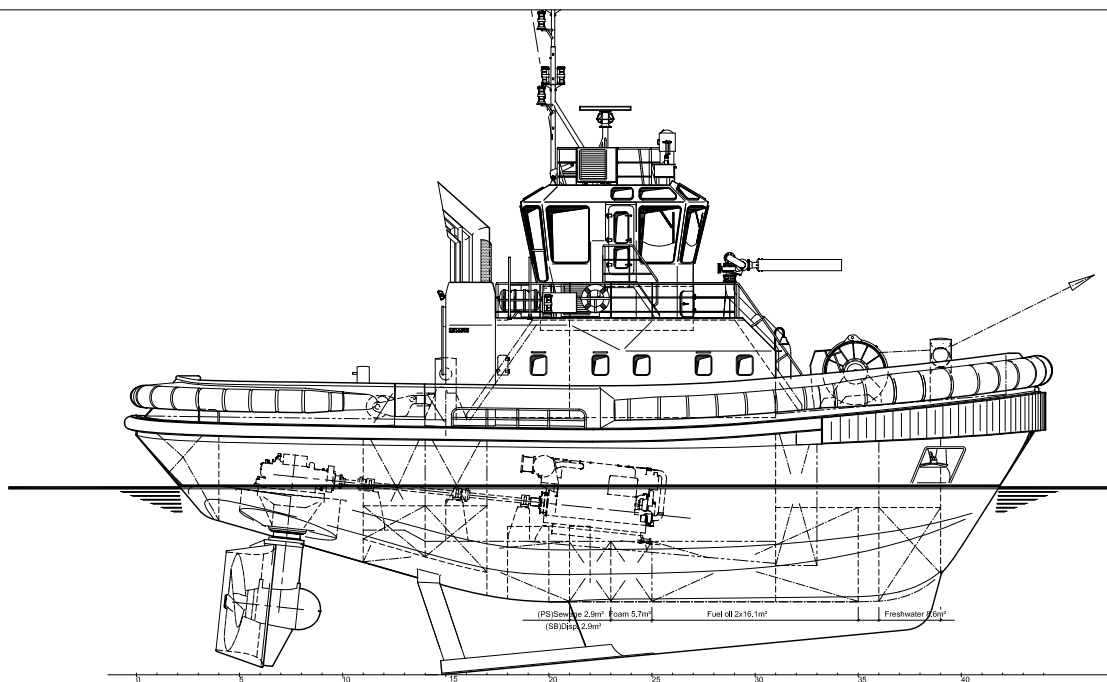
Communication Equipment A2

Updated 14.4.10

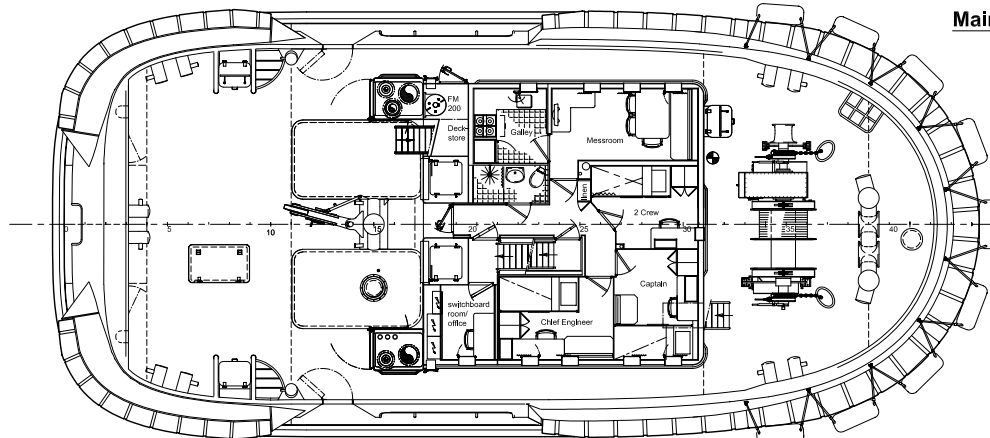
PB Towing

7/F, Hutchison House, 10 Harcourt Road, Central, Hong Kong.

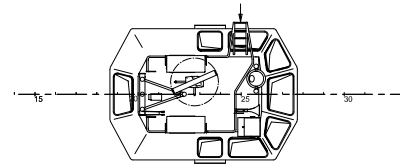
Tel: (+852) 2233 7000 E-mail: pbtowing@pacificbasin.com Website: www.pbtowing.com



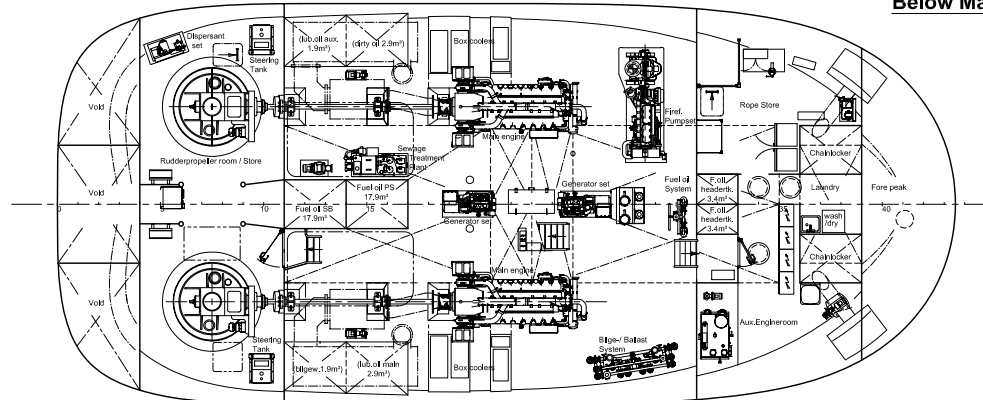
Maindeck



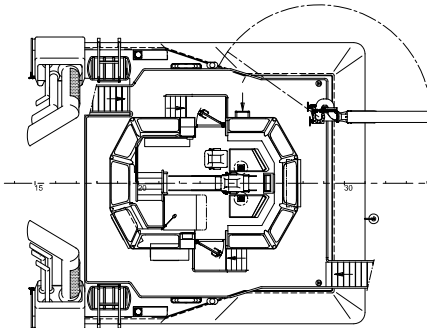
Topdeck



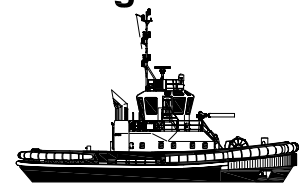
Below Maindeck



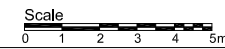
Bridgedeck



Damen ASD Tug 2411



Principal dimensions:
 Length o.a. 24.47 m
 Beam o.a. 11.33 m
 Depth at sides 4.60 m
 Draught aft (approx.) 5.45 m



DAMEN DAMEN SHIPYARDS GORINCHEM <small>Industrieweg 100a Post 20 4200 GA Gorinchem The Netherlands</small>	
General arrangement	
<small>The information and data contained herein are proprietary to Damen Shipyards and are not to be copied, reproduced, published or disclosed to others in whole or in part without prior written consent of Damen Shipyards.</small>	<small>Project no. : 17-01-2008</small> AO <small>scale : 1:50</small> <small>sheet no. : 512230-01/P232884</small>