

# PB Endeavour



## 5600 BHP ASD Harbour & Escort Tug



### General Information

Design	Damen 2411
Yard	Damen Shipyards, Hai Phong, Vietnam
Built	2010
Port of Registry, Flag	Brisbane, Australia
Call Sign	VJN3446
Official Number	859222
Classification Society	Lloyds
IMO No.	9530486
MMSI No.	503384200

### Dimensions

Length Overall	24.47 m
Beam, Moulded	11.33 m
Max Operating Draft	5.40 m
GRT/NRT	250 mt/75 mt

**Accommodation** 3x2 = 6 berths

**Fire Fighting** FiFi ½

### Machinery

Main Engines	2x Caterpillar 3516B
Horsepower	5600 BHP
Bollard Pull	68 mt
ASD Propellers	2x Rolls Royce US 255
Fore Winch	Ridderinkhof, split drum, 150 T brake
Line Pull	30 mt at 11 m/min
Drum Capacities	110m x 104mm tow line
Capstan	5 mt @ 15 m/min
Aft Towing Hook	Mampaey, 100 mt

### Capacities & Performance

Fuel	74,800 litres
Potable Water	8,600 litres
Max Speed	12.5 knots

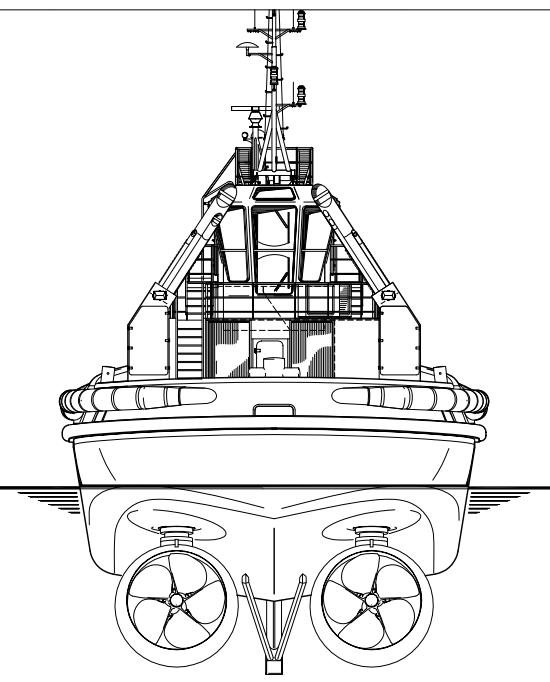
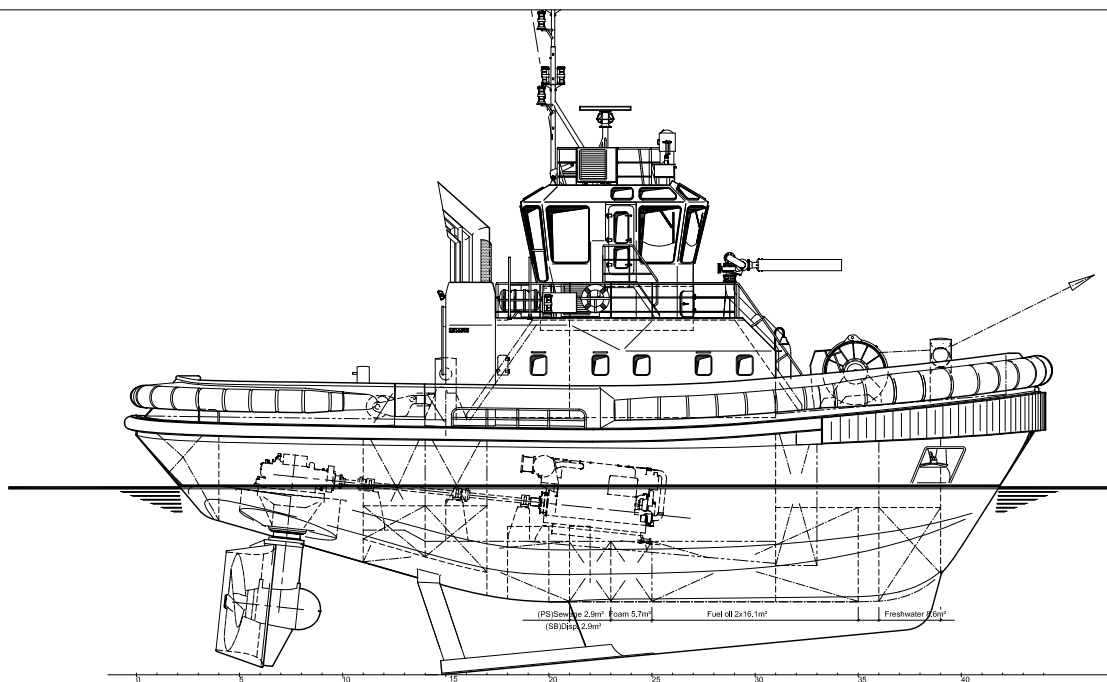
**Communication Equipment** A2

Updated 14.4.10

### PB Towing

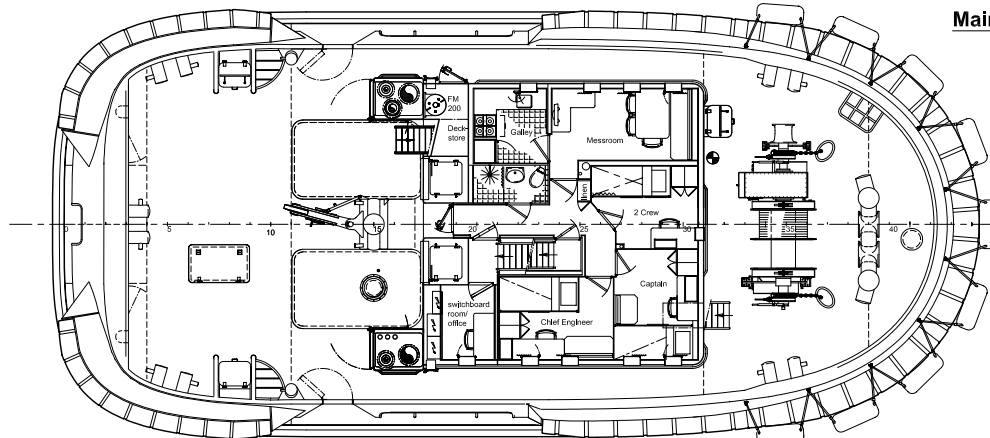
7/F, Hutchison House, 10 Harcourt Road, Central, Hong Kong.

Tel: (+852) 2233 7000 E-mail: [pbtowing@pacificbasin.com](mailto:pbtowing@pacificbasin.com) Website: [www.pbtowing.com](http://www.pbtowing.com)

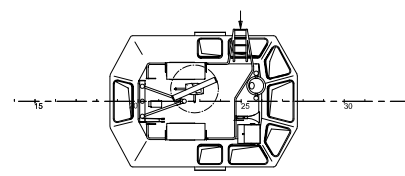


(PS)Sewage 2.9m<sup>3</sup> Foam 5.7m<sup>3</sup> Fuel oil 2x16.1m<sup>3</sup> Freshwater 9.0m<sup>3</sup>  
 (SB)Disp. 2.9m<sup>3</sup>

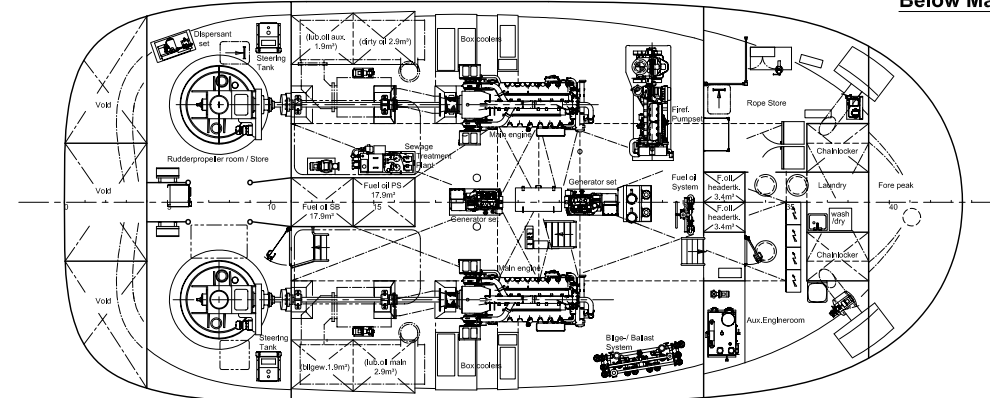
Maindeck



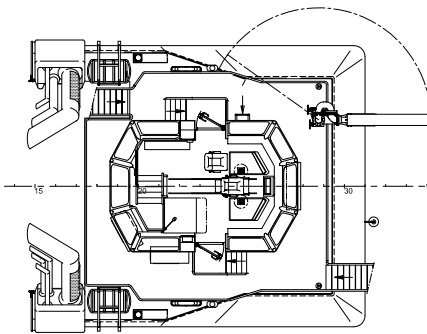
Topdeck



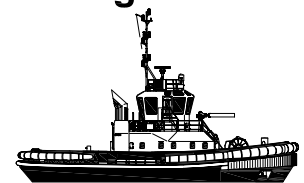
Below Maindeck



Bridgedeck



# Damen ASD Tug 2411



**Principal dimensions:**  
 Length o.a. 24.47 m  
 Beam o.a. 11.33 m  
 Depth at sides 4.60 m  
 Draught aft (approx.) 5.45 m

Scale  
 0 1 2 3 4 5m

<b>General arrangement</b>	
The information and data contained herein are proprietary to Damen Shipyards and are not to be copied, reproduced, published or disclosed to others in whole or in part without prior written consent of Damen Shipyards.	DAMEN SHIPYARDS GORINCHEM Burgwal 100 4816 CA Gorinchem The Netherlands Tel: +31 (0) 1824 31333 Fax: +31 (0) 1824 31334 E-mail: info@damen.nl Web: www.damen.nl
Project: ASD Tug 2411 Date: 17-01-2008 Scale: 1:50 Drawing no.: 512230-01/P232884	Project: ASD Tug 2411 Date: 17-01-2008 Scale: 1:50 Drawing no.: 512230-01/P232884