

PB Kaituna



4400 BHP Ocean Towing and Anchor Handling Tug



General Information

Yard	Sealink Shipyard, Malaysia
Built	2008
Port of Registry, Flag	Avatiu, Cook Islands
Call Sign	E5U2265
Official Number	1349
Classification Society	Bureau Veritas
IMO No.	9420435
MMSI No.	518315000

Dimensions

Length Overall	38.0 m
Beam, Moulded	11.8 m
Max Operating Draft	3.80 m
GRT/NRT	499 mt/149 mt

Accommodation	2x1 + 2x2 + 3x4 = 18 berths
----------------------	--------------------------------

Communication Equipment

A1 + A2 + A3 + Iridium

Life Saving Equipment

Includes 1x Rescue boat

Machinery

Main Engines	2x Cummins QSK60M
Horsepower	4400 BHP
Bollard Pull	53.5 mt
Bow Thruster	5 mt
Winch	Plimsoll, Double drum Waterfall, 150 T brake,
Capacity (each drum)	1000m x 52mm tow wire
Tugger Winches	2x 10 mt at 15 m/min
Capstans	2x 5 mt
Shark Jaws	Plimsoll, 125 mt
Towing Pin	Plimsoll, 125 mt
Stern Roller	150 mt
Deck Crane	2 mt at 6 m

Capacities & Performance

Deck Cargo	300 mt
Deck Strength	5 mt/m ²
Deck Area	150 m ²
Fuel	332,000 litres
Potable Water	150,000 litres
Max Speed	12 knots

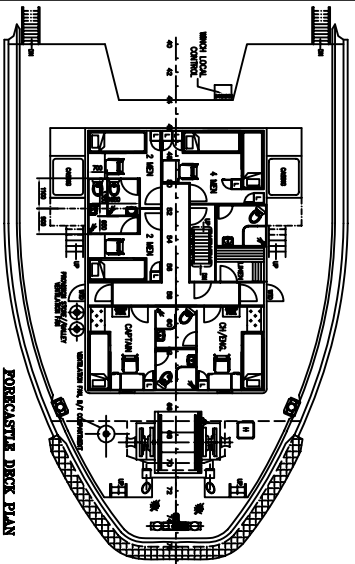
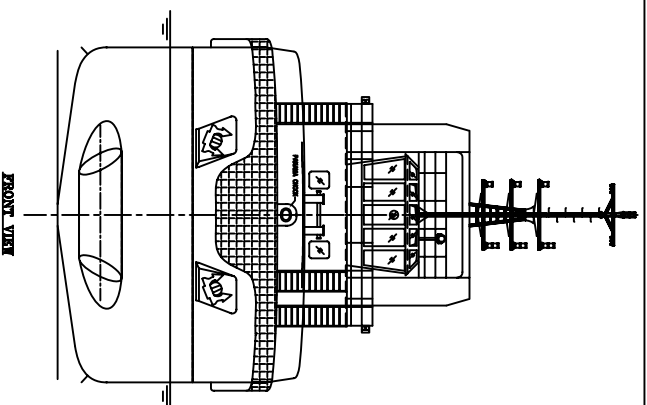
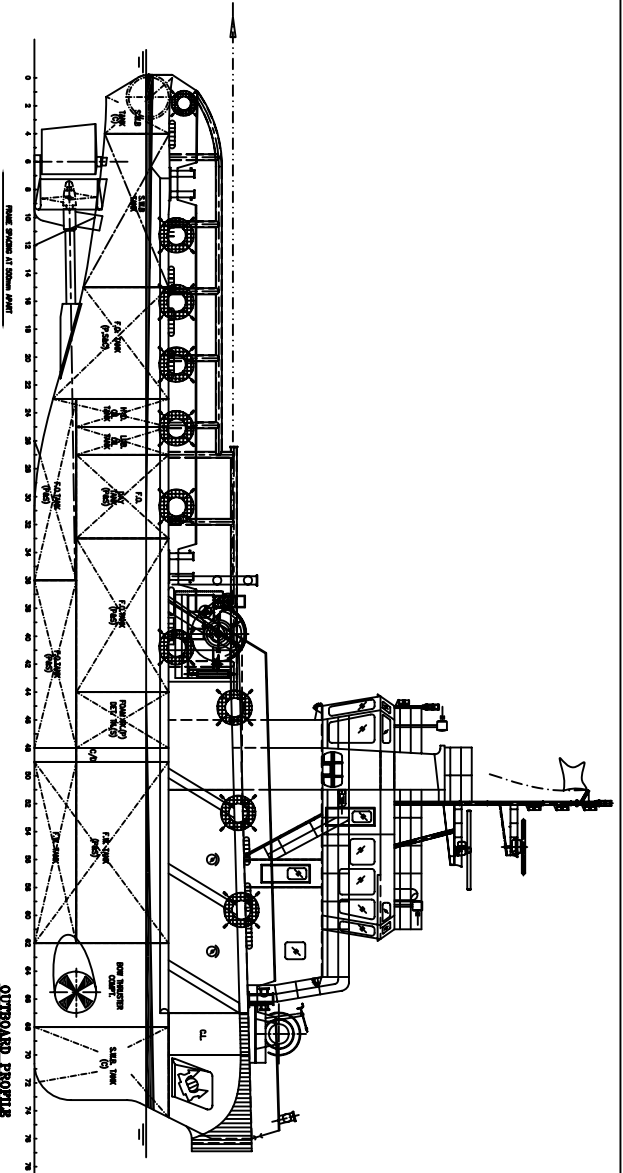
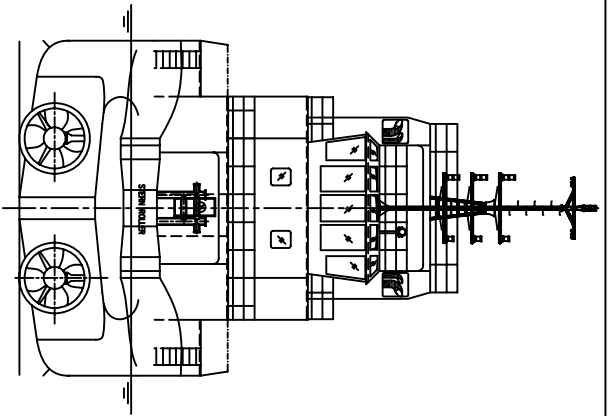
Fire Fighting

FiFi ½

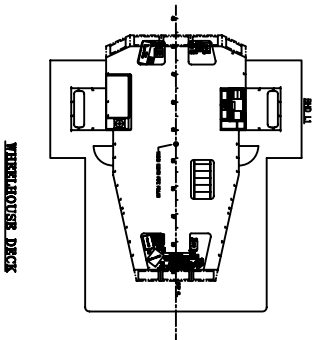
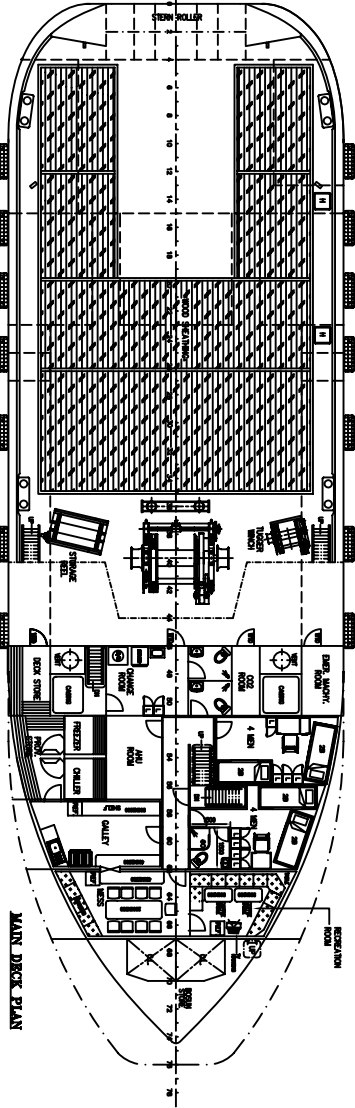
PB Towage

7/F, Hutchison House, 10 Harcourt Road, Central, Hong Kong.

Tel: (+852) 2233 7000 E-mail: pbtowage@pacificbasin.com Website: www.pbtowage.com

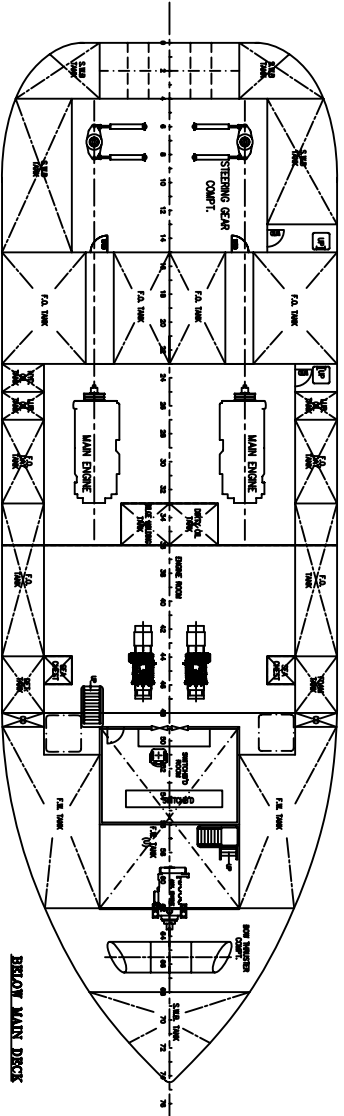


LOCATIONS OF VENTILATION FAN FOR PROVISION STORE, GALLERY AND B/T ROOM



PRINCIPAL DIMENSIONS

LENGTH OVERALL	38.00 M
LENGTH WAREHOUSE	36.30 M
LENGTH B.P.	33.40 M
BREADTH MOULDED	11.80 M
DEPTH MOULDED	4.80 M
DEPTH MOULT MOULDED	3.50 M
COMPLEMENT	18 MEN
FUEL OIL	300.0 TONNES
FRESH WATER	150.0 TONNES



NAME		SEALINK SHIPYARD	
PROJECT		38m TWIN SCREW TOWING TUG	
TITLE		GENERAL ARRANGEMENT	
CLASSIFICATION	SCALE	DRAWING NUMBER	REV.
DATE	1:100		