

PB Katea



2400 BHP Ocean Towing Tug



General Information

Yard	Tuong Aik Shipyard, Sarawak, Malaysia.
Built	2001
Port of Registry, Flag	Avatiu, Cook Islands
Call Sign	E5U2224
Official Number	1308
Classification Society	Bureau Veritas
IMO No.	9259654
MMSI No.	518274000

Dimensions

Length Overall	29 m
Beam, Moulded	9 m
Max Operating Draft	3.5 m
GRT/NRT	254 mt/76 mt

Accommodation	8 berths
----------------------	----------

Machinery

Main Engines	2x Yanmar M220EN
Horsepower	2400 BHP
Bollard Pull	35 mt
Winch	Koyo single drum electro-hydraulic, 70 mt brake
Line Pull	35 mt at 7 m/min
Drum Capacities	750 m x 48 mm tow wire

Capacities & Performance

Fuel	200,000 litres
Potable Water	34,000 litres
Max Speed	11.5 knots

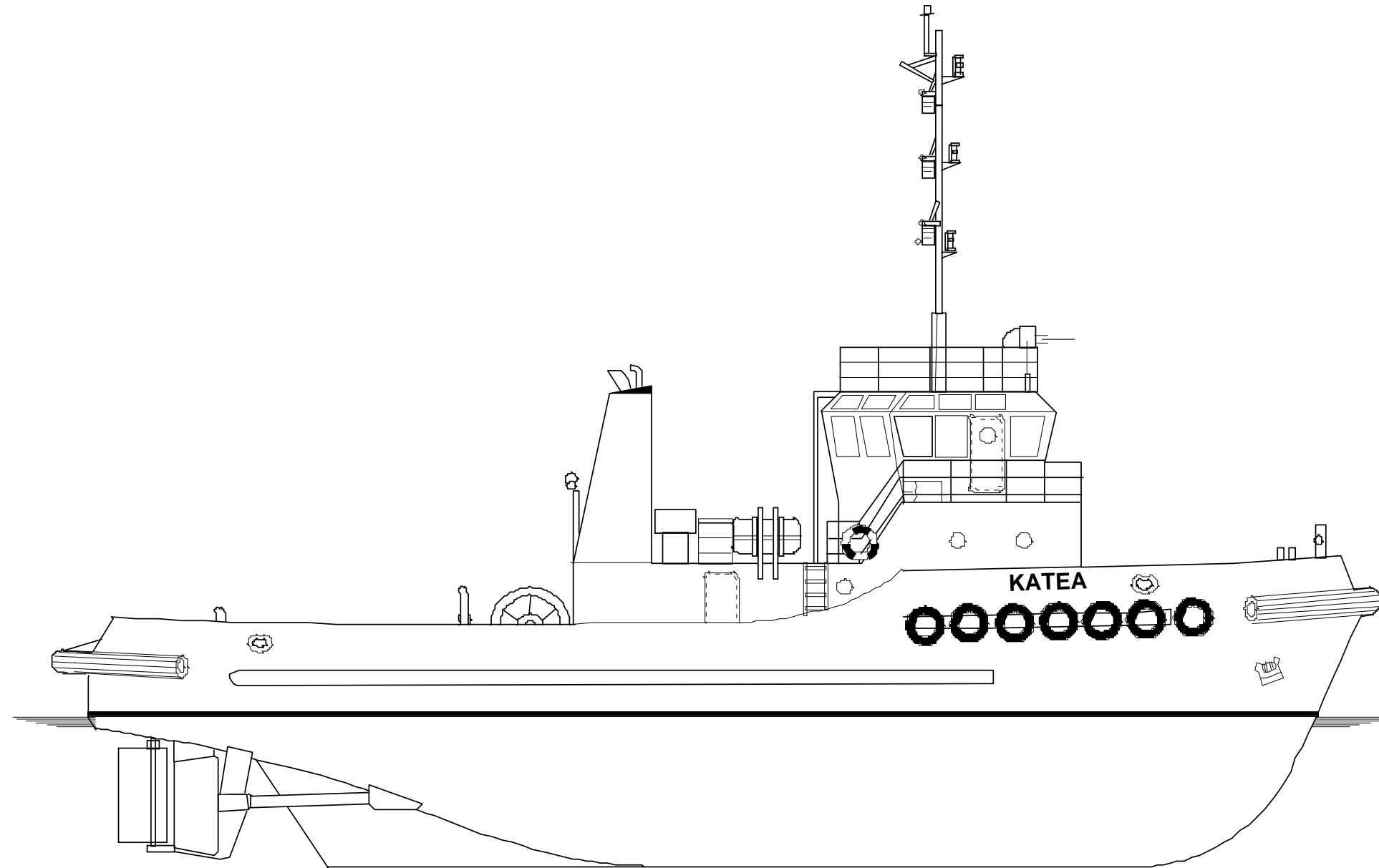
Communication Equipment

A1 + A2 + A3 + Iridium

Updated 27.5.10

[PB Sea-Tow](#)

Colmar Brunton Building, 6-10 The Strand, Takapuna, North Shore City, New Zealand
Tel: (+64) 9 480 6760 E-mail: pbsea-tow@pbsea-tow.com Website: www.pbtowage.com



m. t. KATEA PRINCIPAL PARTICULARS

CALL SIGN	9V6041
OFFICIAL NUMBER	389265
IMO NUMBER	9259654
PORT OF REGISTRY	SINGAPORE
YEAR BUILT/PLACE	2001/TUONG AIK SHIPYARD, SARAWAK, MALAYSIA
CLASS	BUREAU VERITAS
OPERATORS	SEA-TOW LTD, AUCKLAND, NEW ZEALAND
GROSS TONNAGE	254
NETT TONNAGE	66
LENGTH OVERALL	29.20 METRES
BREADTH	9.00 METRES
MAXIMUM DRAFT	3.50 METRES
COMPLEMENT	6 CREW
MAIN ENGINES	2 OFF YANMAR M220EN - EACH 884 KW
BOLLARD PULL	35 TONNES SINGLE DRUM TOW WINCH
TOWING SPECS.	500 METRES x 48mm WIRE
ENDURANCE	30 DAYS

REFERENCE DRAWINGS

NOTES

A	ISSUED FOR COMMENT	LT	12/11/06
REV No.		BY	DATES
SCALES	DESIGN: - L TALBOT	NOV 06	
1:125	DRAWN: - L.D.T	NOV 06	
	CHECK: -	-	

We reserve all rights in this document and in the information contained therein. Reproduction, disclosure to third parties without express authority, or use for any unauthorised purpose is strictly forbidden and will result in legal action. © L & A TALBOT SERVICES LTD

SEA-TOW LTD.
COASTAL & OFFSHORE TUG & BARGE OPERATORS
102 Mokoia Rd, P.O. Box 34434, Birkenhead, Auckland, New Zealand
PHONE 64 9 480 6760 FAX 64 9 480 6554

TSL
TALBOT SERVICES
P.O. BOX 33
MANGAWHAI 0540
NORTHLAND
NEW ZEALAND
Phone: (09) 431 5066
Mobile: 0274 926 371
Fax: (09) 431 5044
email: l.talbot@xtra.co.nz

L & A Talbot Services Ltd

TITLE
**M T KATEA
GENERAL ARRANGEMENT**

DRAWING No.	REV
1807/D3/112	A