

PB Komata



4400 BHP Ocean Towing and Anchor Handling Tug

General Information

Yard	South China Shipyard, Guangdong, China
Built	2009
Port of Registry, Flag	Avatiu, Cook Islands
Call Sign	E5U2292
Official Number	1376
Classification Society	Bureau Veritas
IMO No.	9520467
MMSI No.	518342000

Dimensions

Length Overall	42.0 m
Beam, Moulded	11.0 m
Max Operating Draft	3.50 m
GRT/NRT	499 mt/149 mt

Accommodation	3x1 + 3x2 + 1x3 + 1x4 = 16 berths
----------------------	--------------------------------------

Communication Equipment

A3 + Iridium

Life Saving Equipment

Includes 1x Rescue boat

Fire Fighting

FiFi ½

Machinery

Main Engines	2x Cummins QSK60-M
Horsepower	4400 BHP
Bollard Pull	66 mt
Bow Thruster	4 mt
Stern Thruster	1.5 mt
Aft Winch	Marine Equip., double drum, 180 mt brake
Line Pull (1st layer)	65 mt x 5m/min
Tow & Spare Wire	1000m x 52mm
Tugger Winches	2x 10 mt at 15m/min
Capstans	5 mt
Shark Jaws	200 mt
Towing Pins	200 mt
Stern Roller	200 mt
Deck Crane	2 mt at 9 m (Hiab)

Capacities & Performance

Deck Cargo	100 mt
Deck Strength	5 mt/m ²
Deck Area	160 m ²
Fuel	322 mt
Potable Water	78 mt
Sewage Treatment Plant	
Max Speed	12 knots

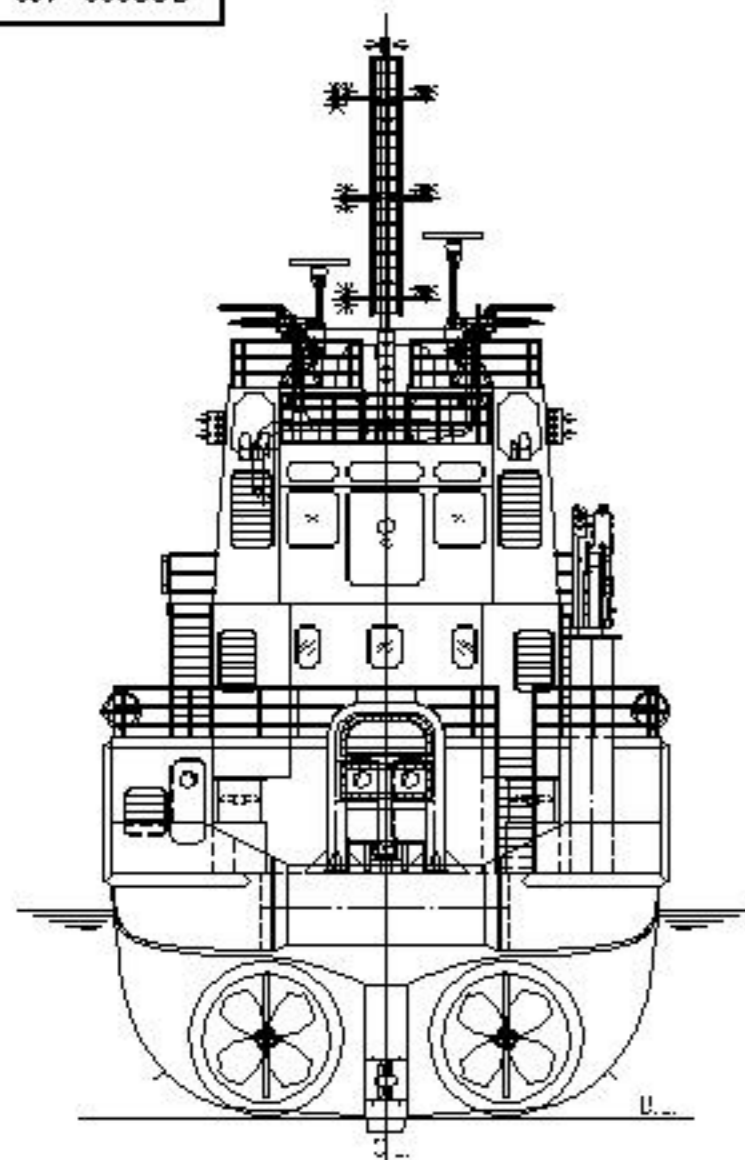
Updated 24.12.09

PB Towage

7/F, Hutchison House, 10 Harcourt Road, Central, Hong Kong.

Tel: (+852) 2233 7000 E-mail: pbtowage@pacificbasin.com Website: www.pbtowage.com

A



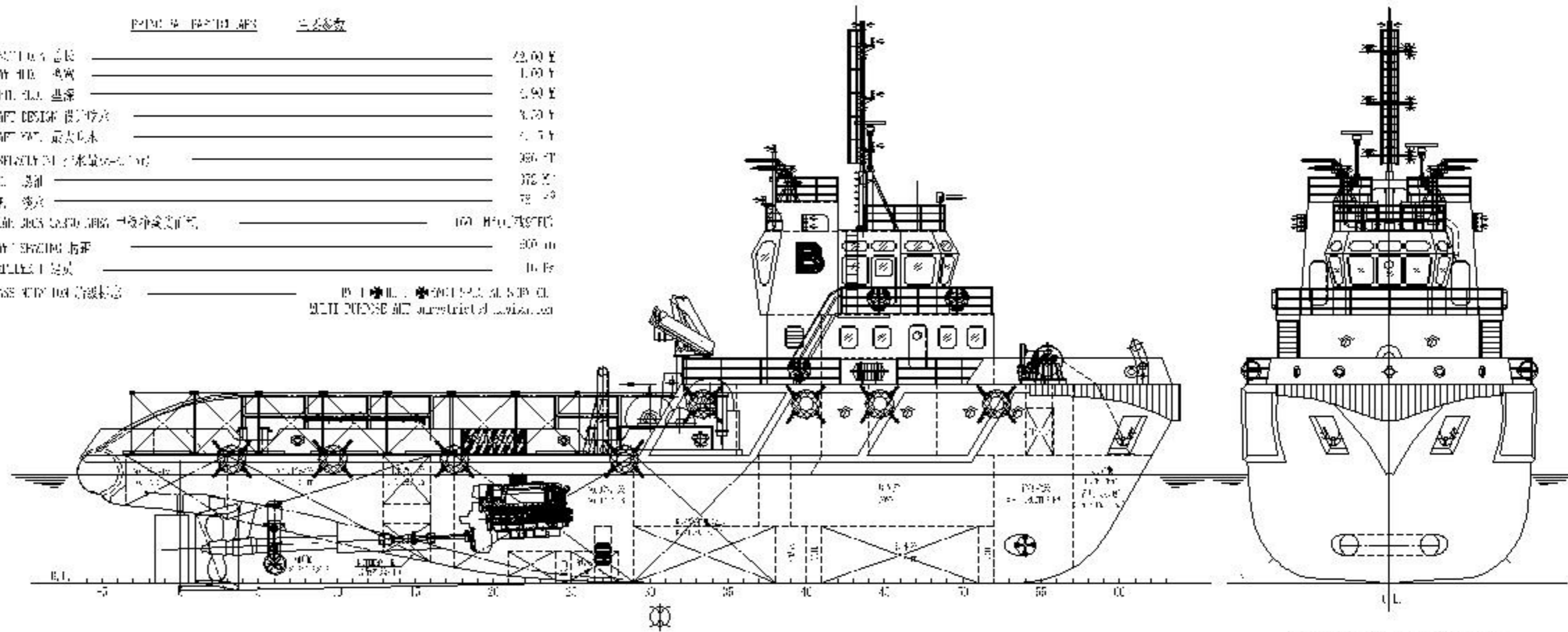
尾视图 VIEW FROM AFT

主要性能参数 主要参数

船体长度	23.00 m
船体宽度	4.00 m
吃水深度	0.90 m
最大设计速度	8.00 kt
最大功率	100 kW
主机功率	100 kW
主机型号	4D60
主机品牌	MAN B&W
主机数量	2
主机位置	机舱
主机功率	100 kW
主机品牌	MAN B&W
主机数量	2
主机位置	机舱

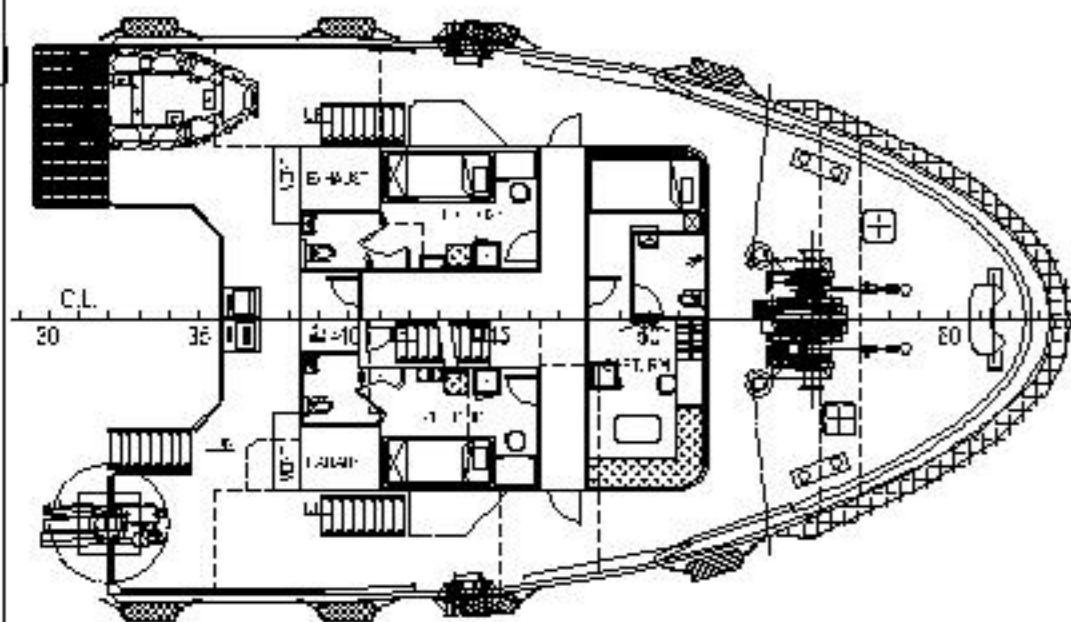
BY: [Signature] DATE: 2014.10.10
 SOUTH CHINA SHIYANG

B

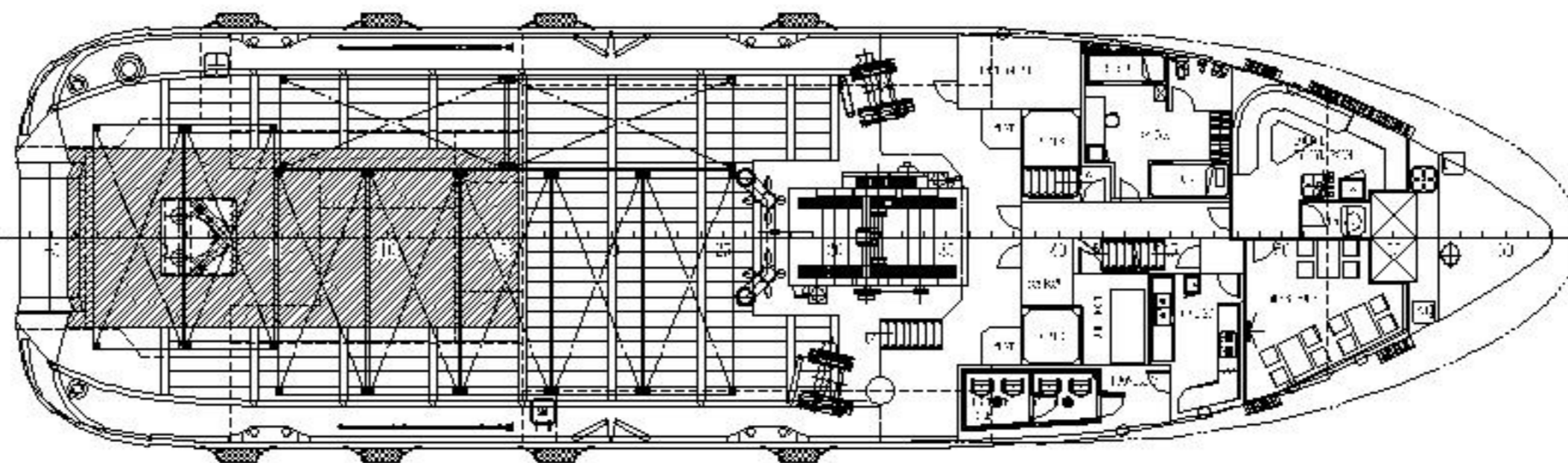


首视图 VIEW FROM BOW

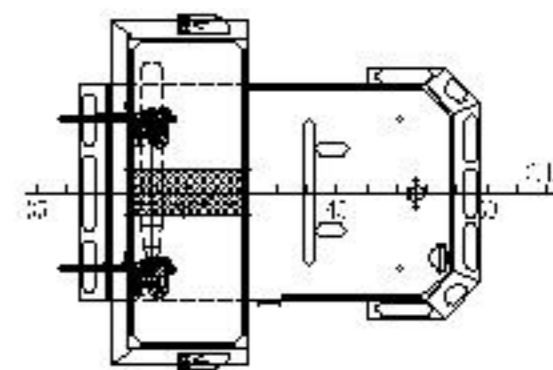
C



首楼甲板 FORECASTLE DECK

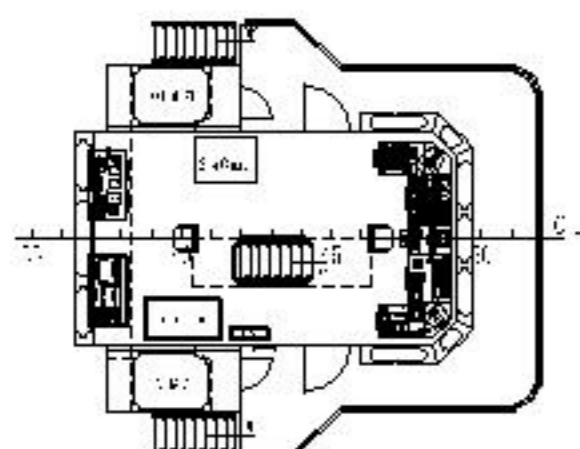


主甲板 MAIN DECK

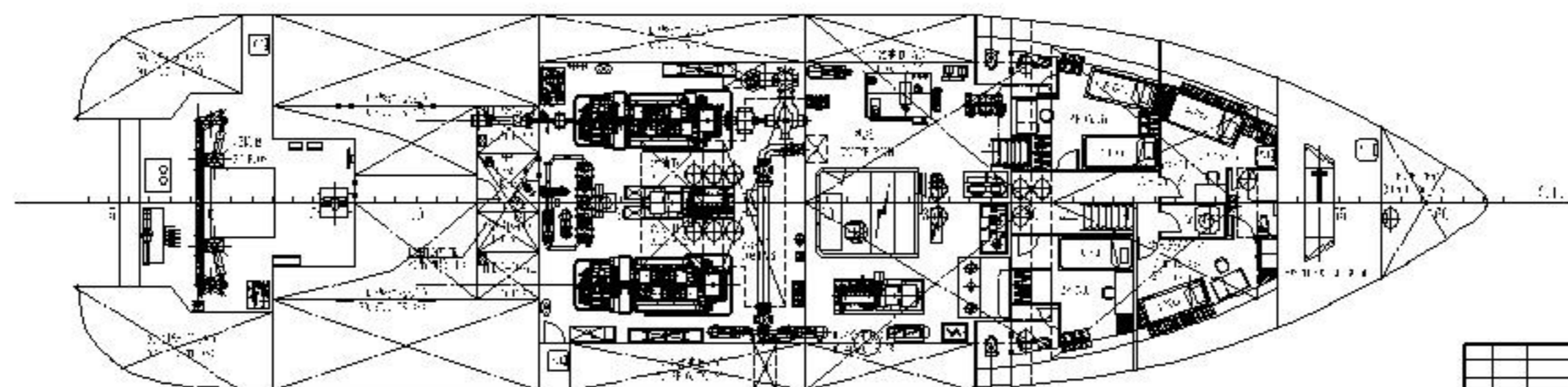


罗经甲板 COMPASS DECK

D



驾驶室甲板 WHEELHOUSE DECK



主甲板下 BELOW MAIN DECK



4420E-# UTILITY AFTs		KITTY FOX	
设计师		SCS028-100-02	
设计检查		GENERAL ARRANGEMENT	
设计确认		(Total) 1 (Page) 1	
设计批准		A.T.NO. 183	
设计签字		SOUTH CHINA SHIYANG	