

PB Murrumbidgee



General Information

Design	Damen 2411
Yard	Damen Shipyards, Hai Phong, Vietnam
Built	2010
Port of Registry, Flag	Sydney, Australia
Call Sign	VJN3448
Official Number	859221
Classification Society	Lloyds
IMO No.	9530503
MMSI No.	503384400

Dimensions

Length Overall	24.47 m
Beam, Moulded	11.33 m
Max Operating Draft	5.40 m
GRT/NRT	250 mt/75 mt

Accommodation 3x2 = 6 berths

Fire Fighting FiFi ½

Machinery

Main Engines	2x Caterpillar 3516B
Horsepower	5600 BHP
Bollard Pull	69 mt
ASD Propellers	2x Rolls Royce US 255
Fore Winch	Ridderinkhof, split drum, 150 T brake
Line Pull	30 mt at 11 m/min
Drum Capacities	110m x 104mm tow line
Capstan	5 mt @ 15 m/min
Aft Towing Hook	Mampaey, 100 mt

Capacities & Performance

Fuel	74,800 litres
Potable Water	8,600 litres
Max Speed	12.5 knots

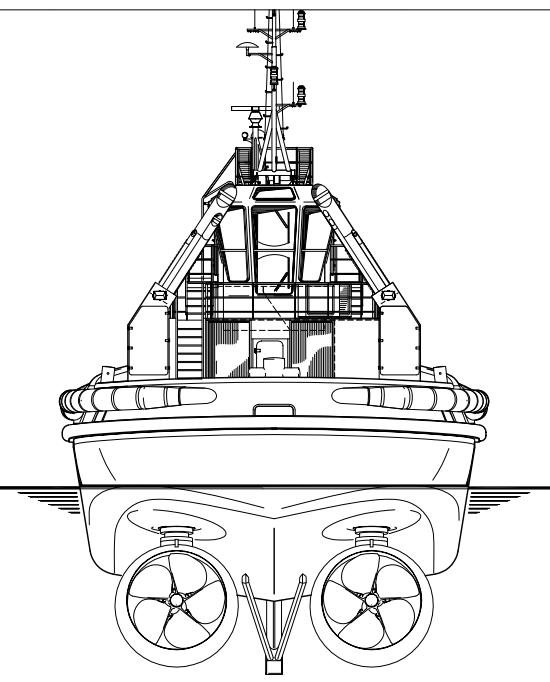
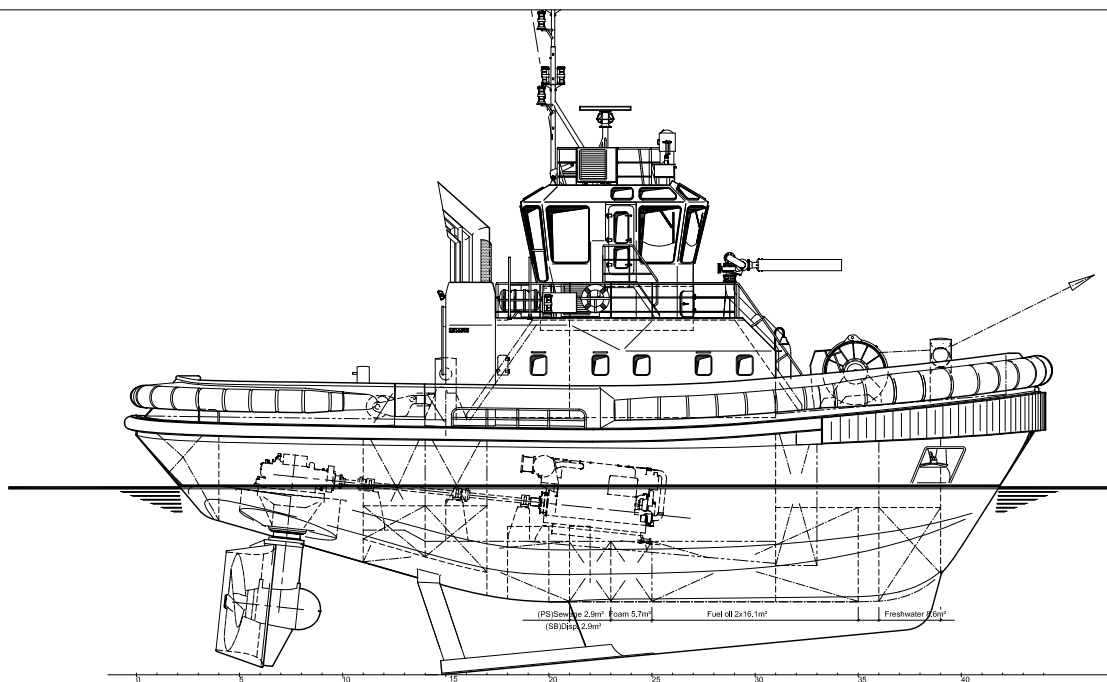
Communication Equipment A2

Updated 14.4.10

PB Towing

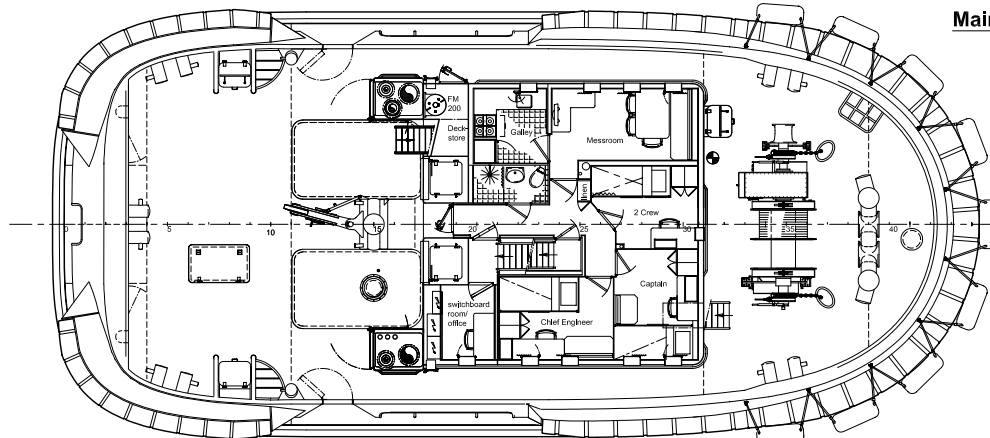
7/F, Hutchison House, 10 Harcourt Road, Central, Hong Kong.

Tel: (+852) 2233 7000 E-mail: pbtowage@pacificbasin.com Website: www.pbtowage.com

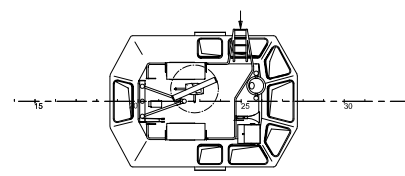


(PS)Sewage 2.9m³ Foam 5.7m³ Fuel oil 2x16.1m³ Freshwater 9.0m³
 (SB)Disp. 2.9m³

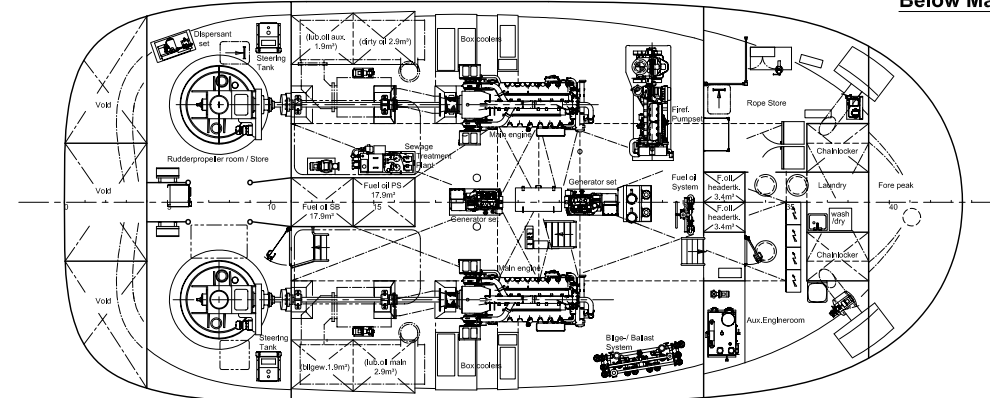
Maindeck



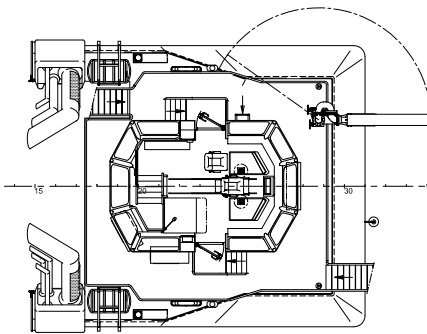
Topdeck



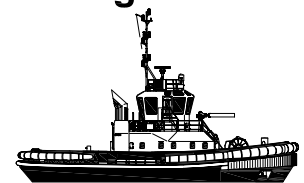
Below Maindeck



Bridgedeck



Damen ASD Tug 2411



Principal dimensions:
 Length o.a. 24.47 m
 Beam o.a. 11.33 m
 Depth at sides 4.60 m
 Draught aft (approx.) 5.45 m



DAMEN DAMEN SHIPYARDS GORINCHEM <small>Industriepark Buiten Post 20 4201 GB Gorinchem The Netherlands</small>	
General arrangement	
<small>The information and data contained herein are proprietary to Damen Shipyards and are not to be copied, reproduced, published or disclosed to others in whole or in part without prior written consent of Damen Shipyards.</small>	<small>Project no. : 17-01-2008</small> AO <small>scale : 1:50</small> <small>sheet no. : 512230-01/P232884</small>