

PB Darling



General Information

Design	Damen 2412
Yard	Damen Shipyards, Hai Phong, Vietnam
Built	2008
Port of Registry, Flag	Brisbane, Australia
Call Sign	VKV7143
Official Number	858702
Classification Society	Lloyds
IMO No.	9389796
MMSI No.	503226300

Dimensions

Length Overall	24.65 m
Beam, Moulded	12.63 m
Max Operating Draft	5.85 m
GRT/NRT	298 mt/89 mt

Accommodation 2x1 + 1x2 = 4 berths

Fire Fighting FiFi ½

Machinery

Main Engines	2x Caterpillar 3516B
Horsepower	5605 BHP
Bollard Pull	68.2 mt
ASD Propellers	2x Rolls Royce US 255
Aft Winch	Kraaijveld, split drum, 150 T brake
Line Pull	30 mt at 11 m/min
Drum Capacities	102m x 104mm mooring line
Towing Hook	Aft, 100 mt

Capacities & Performance

Fuel	77,000 litres
Potable Water	11,800 litres
Max Speed	12.5 knots

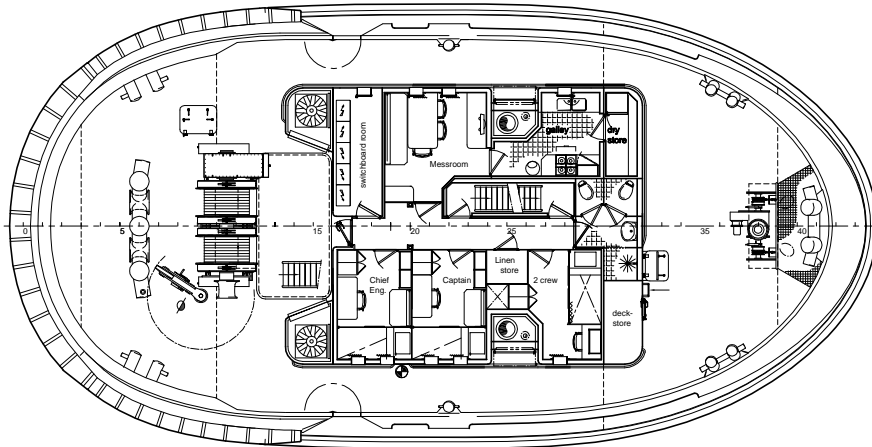
Communication Equipment A1

PB Towage

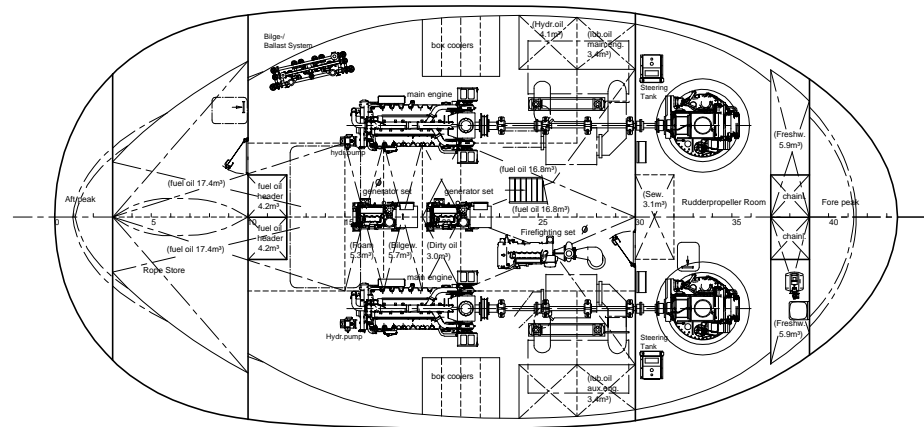
7/F, Hutchison House, 10 Harcourt Road, Central, Hong Kong.

Tel: (+852) 2233 7000 E-mail: pbtowage@pacificbasin.com Website: www.pbtowage.com

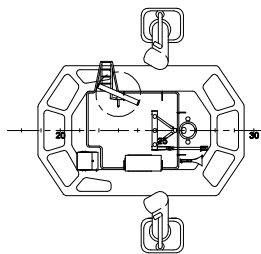
Maindeck



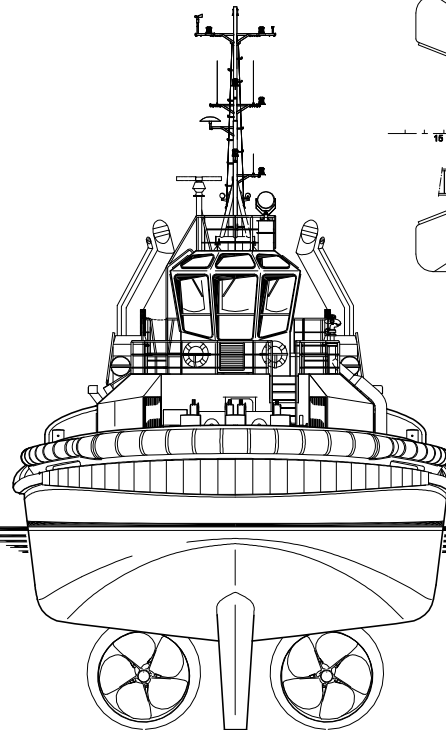
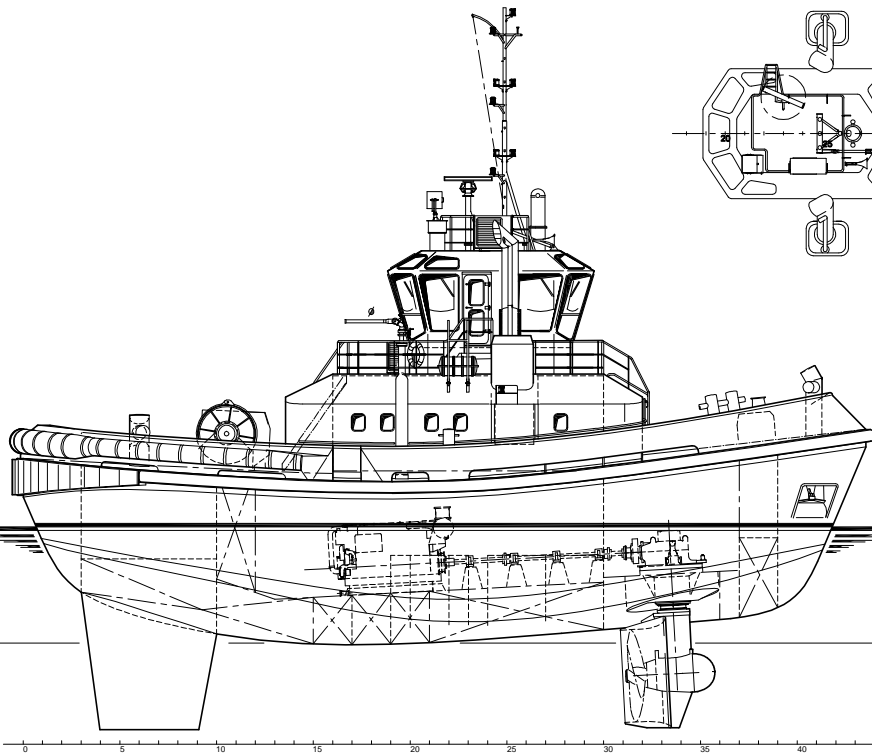
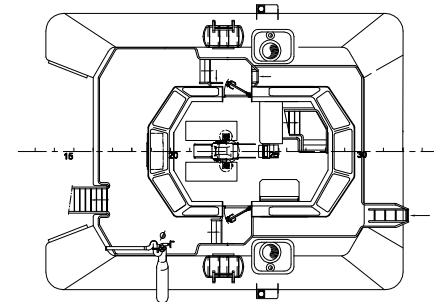
Below Maindeck



Topdeck



Bridgedeck



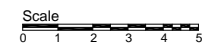
Damen ATD Tug 2412



Principal dimensions:

Length o.a.	24.65 m
Beam o.a.	12.63 m
Depth at sides	4.60 m
Draught aft (approx.)	5.85 m

The information and data contained herein are proprietary to Damen Shipyards and are not to be copied, reproduced, modified or disclosed in whole, in part or in part without prior written consent of Damen Shipyards.	
General arrangement	
man : R. de Lamper date : 30-06-2005 [A0] scale : 1:50 sheet no. : 545000-01-P230657	sheet : partofset : 1 total no. of sheets : sheet no. :



ALL ITEMS MARKED WITH Ø ARE OPTIONAL SEE RELEVANT SPECIFICATION