

## 5600 BHP ATD Harbour & Escort Tug



### General Information

Design	Damen 2412
Yard	Damen Shipyards, Hai Phong, Vietnam
Built	2008
Port of Registry, Flag	Brisbane, Australia
Call Sign	VKV7142
Official Number	858703
Classification Society	Lloyds
IMO No.	9389801
MMSI No.	503226400

### Dimensions

Length Overall	24.65 m
Beam, Moulded	12.63 m
Max Operating Draft	5.85 m
GRT/NRT	313 mt/93 mt

**Accommodation** 2x1 + 1x2 = 4 berths

**Fire Fighting** FiFi ½

### Machinery

Main Engines	2x Caterpillar 3516B
Horsepower	5605 BHP
Bollard Pull	68.6 mt
ASD Propellers	2x Rolls Royce US 255
Aft Winch	Kraaijveld, split drum, 150 T brake
Line Pull	30 mt at 11 m/min
Drum Capacities	102m x 104mm mooring line
Towing Hook	Aft, 100 mt

### Capacities & Performance

Fuel	77,000 litres
Potable Water	11,800 litres
Max Speed	12.5 knots

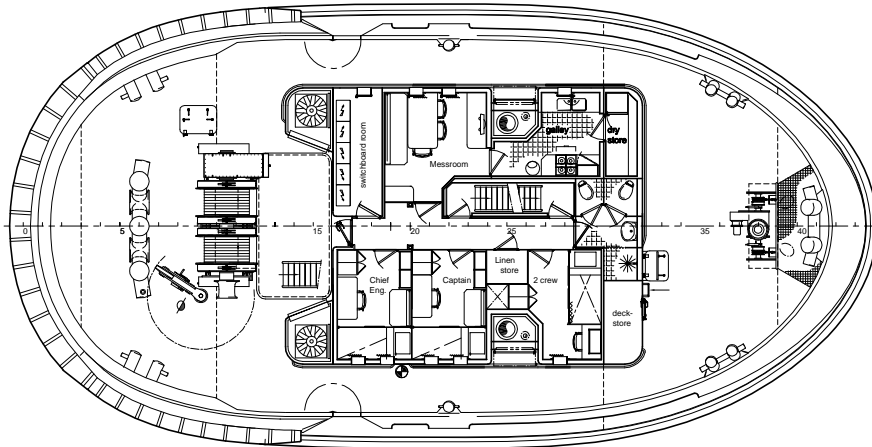
**Communication Equipment** A1

### PB Towage

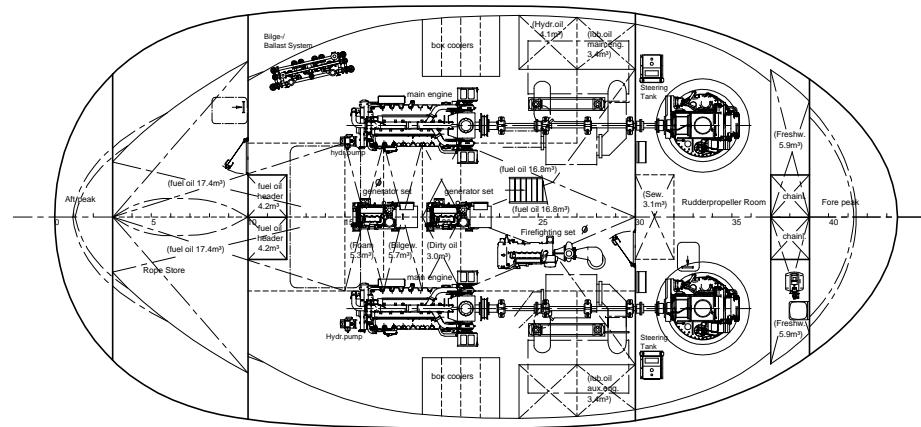
7/F, Hutchison House, 10 Harcourt Road, Central, Hong Kong.

Tel: (+852) 2233 7000 E-mail: [pbtowage@pacificbasin.com](mailto:pbtowage@pacificbasin.com) Website: [www.pbtowage.com](http://www.pbtowage.com)

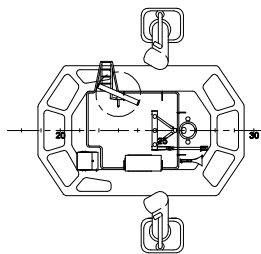
Maindeck



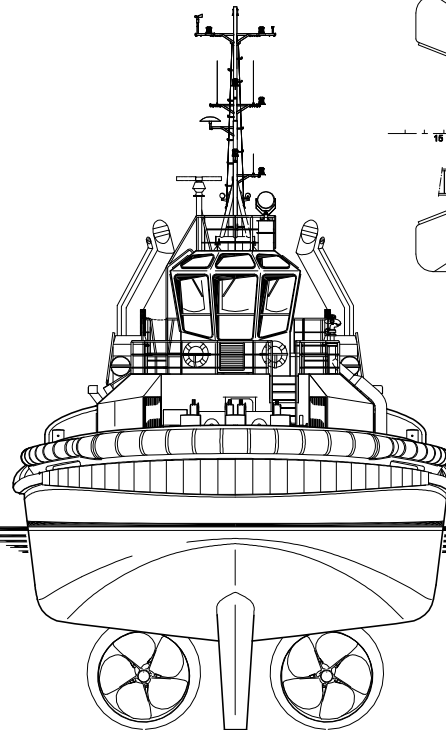
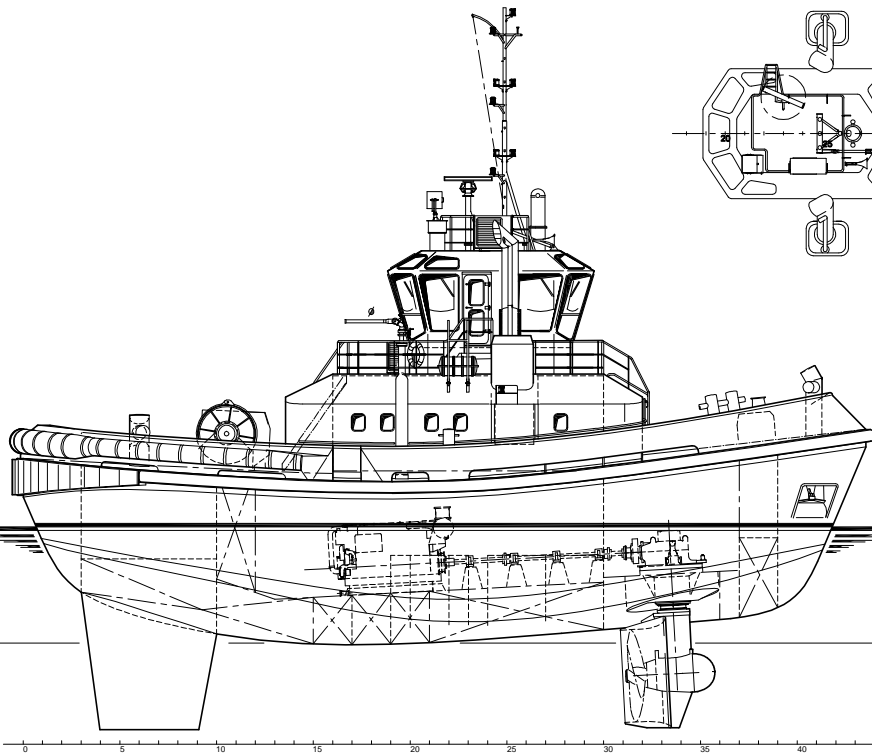
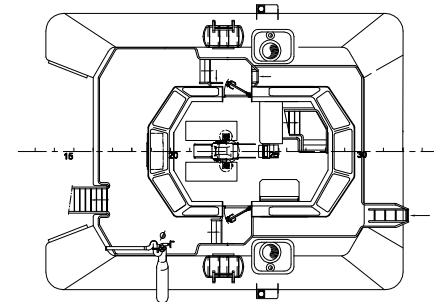
Below Maindeck



Topdeck



Bridgedeck



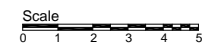
# Damen ATD Tug 2412



Principal dimensions:

Length o.a.	24.65 m
Beam o.a.	12.63 m
Depth at sides	4.60 m
Draught aft (approx.)	5.85 m

<b>General arrangement</b>	
man : R. de Lamper date : 30-06-2005 [A0] scale : 1:50 sheet no. : 545000-01-P230657	sheet : partofset : 1 total n. of sheets : sheet n. of this set :



ALL ITEMS MARKED WITH Ø ARE OPTIONAL SEE RELEVANT SPECIFICATION