

Sea-Tow 80



7900 DWT Project Cargo Barge



General Information

Yard	Ship Constructors Ltd, Whangarei, New Zealand
Built	1994
Port of Registry, Flag	Avatui, Cook Islands
Official Number	876068

Towing Equipment

Towing Bridle	76mm studlink chain
Emergency Tow Wire	48mm Wire x 97m
2x Winch/Windlass	Fore & Aft, 15 mt at 9.5 m/min line pull

Dimensions

Length Overall	97.00 m
Beam, Moulded	24.00 m
Max Operating Draft	4.8 m
Draft Lightship	1.0 m
Deck Dimensions	86 m x 21.2 m
Cubic Capacity	10074 m ³
Deck Loading	14 mt/m ²
Side Walls	6.0 m
DWT	7900 mt
GRT	3565 mt

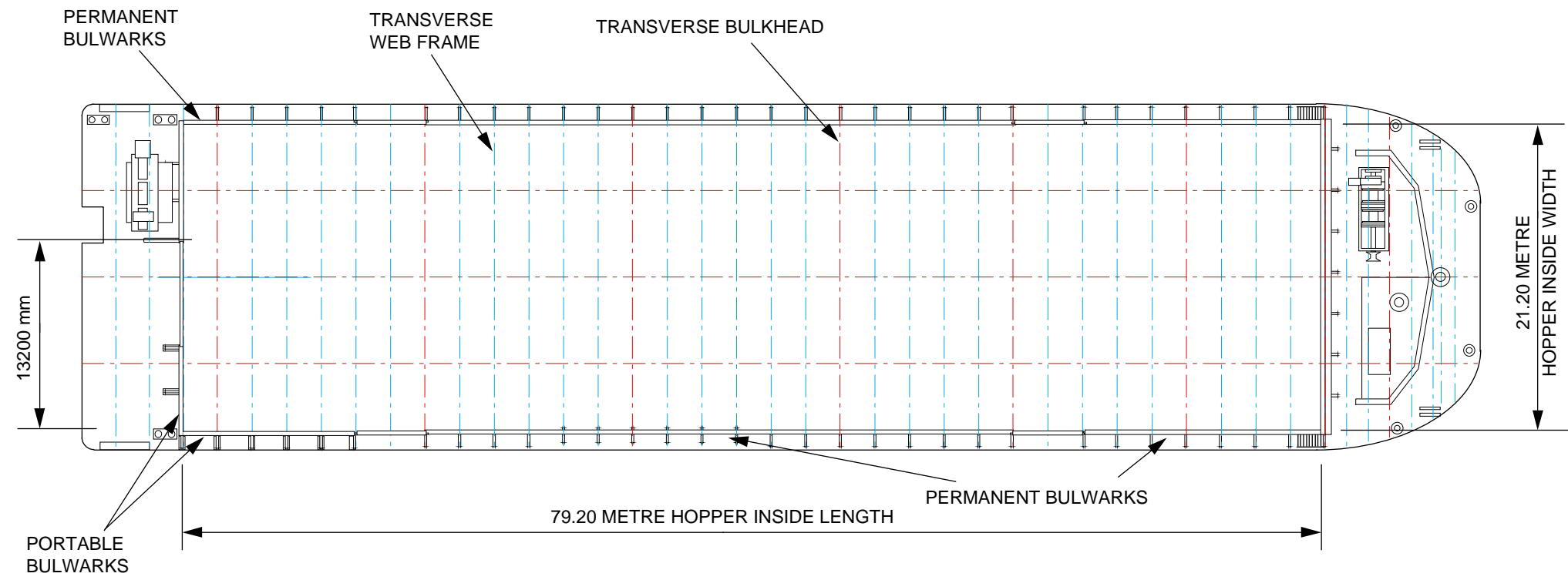
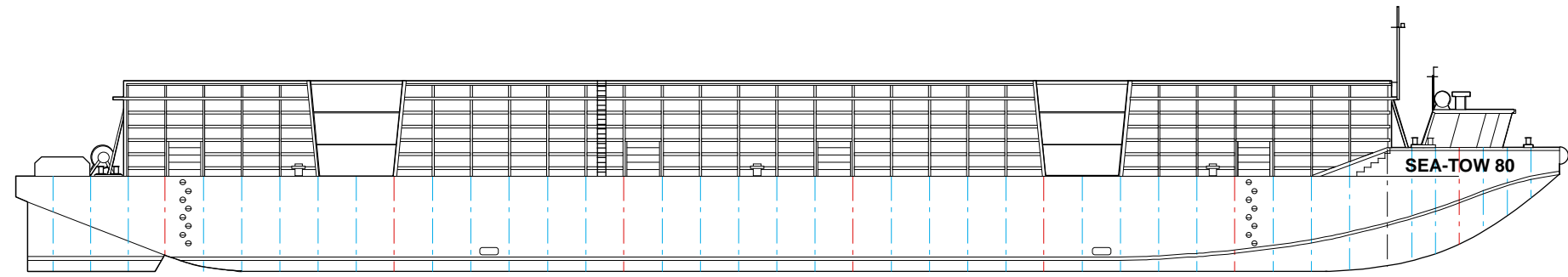
RoRo Features

Removable aft bulwark and doors for RoRo
Stern Ramp Rail
Removable Ramps

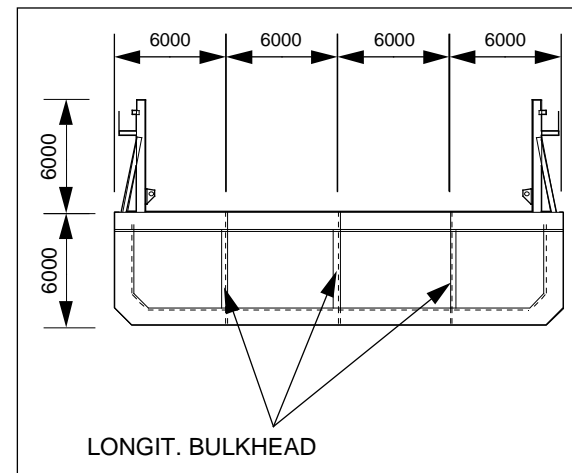
Updated 23.9.10

[PB Sea-Tow](#)

Colmar Brunton Building, 6-10 The Strand, Takapuna, North Shore City, New Zealand
Tel: (+64) 9 480 6760 E-mail: pbsea-tow@pbsea-tow.com Website: www.pbtowage.com



SEA-TOW 80 - PRINCIPAL PARTICULARS	
LENGTH O.A MLD	97.00 METRES
LENGTH W.L.	90.50 METRES
BEAM MLD	24.00 METRES
DEPTH MLD	6.00 METRES
DISPLACEMENT LIGHTSHIP	1919 TONNES
DEADWEIGHT	8000 TONNES
DISPLACEMENT	9919 TONNES
LIGHT DRAFT	1.05 METRES



DECK LOADING PARTICULARS

UNIFORMLY DISTRIBUTED LOAD	14.0 TONNES/SQ. METRE
1 METRE SQUARE STOOL ANYWHERE	60 TONNES
1 METRE SQUARE STOOL ON CENTRE SPAN OF TRANSVERSE WEB FRAME	90 TONNES
1 METRE SQUARE STOOL ON TRANSVERSE BULKHEAD	165 TONNES
1 METRE SQUARE STOOL ON LONGITUDINAL BULKHEAD	75 TONNES

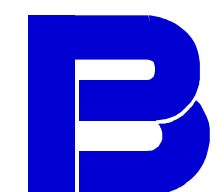
FOR SPECIFIC LOADCASES NOT COVERED ABOVE, CONTACT PB SEA-TOW LTD.

REFERENCE DRAWINGS

NOTES

C	PB ADDED	LT	04/11/08
B	NAME WAS ST4	LT	08/11/06
A	ISSUED FOR COMMENT	LT	27/07/00
REV No.		BY	DATES
SCALES	DESIGN: - L TALBOT	JULY 00	
1:400	DRAWN: - L.D.T	JULY 00	
	CHECK: -	-	

We reserve all rights in this document and in the information contained therein. Reproduction, disclosure to third parties without express authority, or use for any unauthorised purpose is strictly forbidden and will result in legal action. © L & A TALBOT SERVICES LTD.



PB Sea-Tow

TSL
TALBOT SERVICES
 P.O. BOX 33
 MANGAWHAI 0540
 NORTHLAND
 NEW ZEALAND
 Phone: (09) 431 5066
 Mobile: 0274 926 371
 Fax: (09) 431 5044
 email: l.talbot@xtra.co.nz

L & A Talbot Services Ltd

TITLE
SEA-TOW 80
TECHNICAL DETAILS

DRAWING No.	REV
1569/D3/121	C