

# Yarra



## 3200 BHP ASD Harbour & Coastal Towing Tug



### General Information

Yard	Imamura Shipbuilding, Kure, Japan.
Built	1995
Port of Registry, Flag	Melbourne, Australia
Call Sign	VKV7103
Official Number	858472
Classification Society	Lloyds
IMO No.	9139452
MMSI No.	503185400

### Dimensions

Length Overall	26.1 m
Beam, Moulded	8.5 m
Max Operating Draft	3.5 m
GRT/NRT	214 mt/73 mt

**Accommodation** 3x2 = 6 berths

### Machinery

Main Engines	2x Niigata 6L2511X
Horsepower	3200 BHP
Bollard Pull	43 mt
ASD Propellers	2x Niigata ZP-11
Fore Winch	Yamamoto, 80 T brake,
Line Pull	2 mt at 25 m/min
Drum Capacities	110m x 96 mm mooring line
Aft Towing Hook	40 mt

### Capacities & Performance

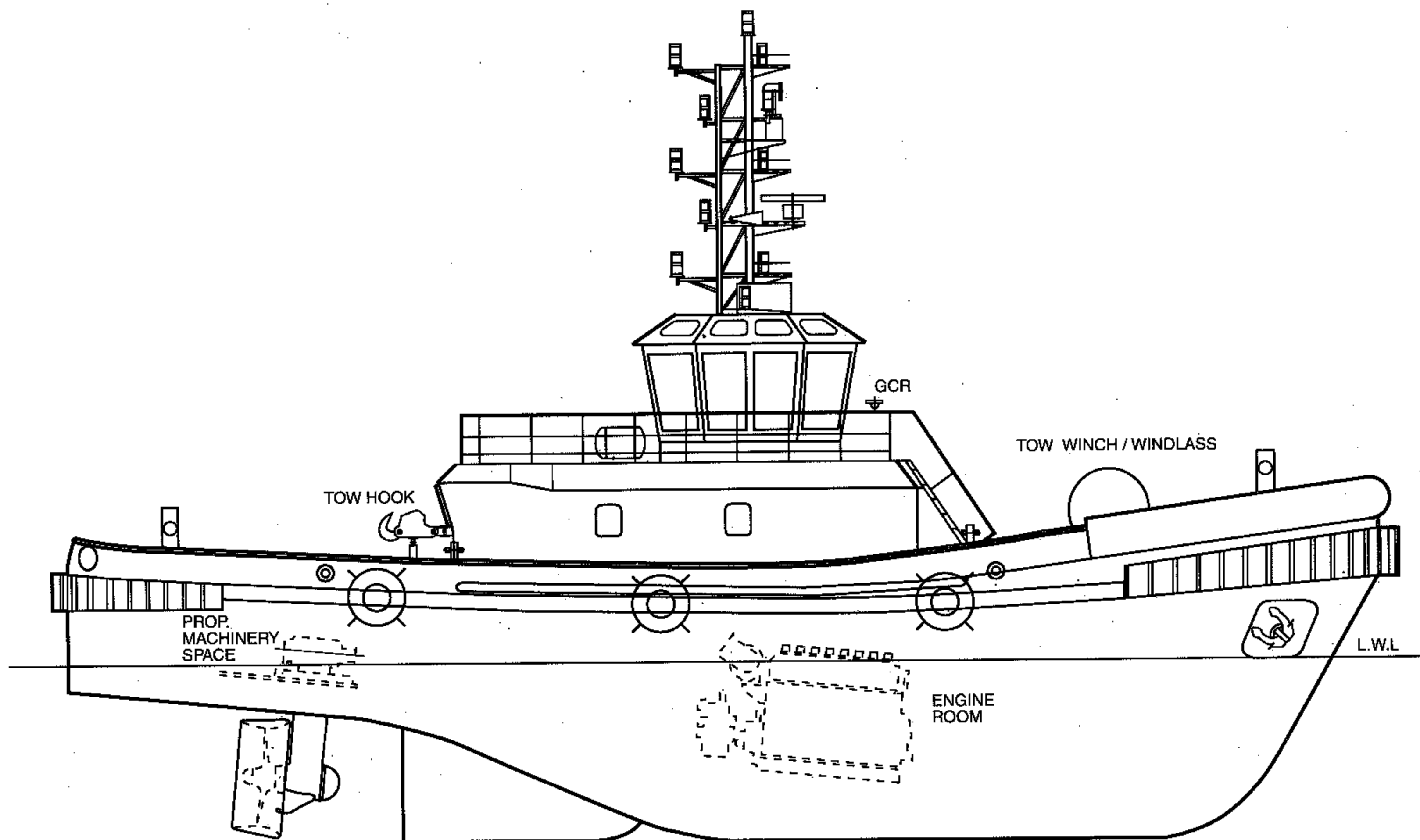
Fuel	66,790 litres
Potable Water	18,620 litres
Max Speed	12.5 knots

**Communication Equipment** A1

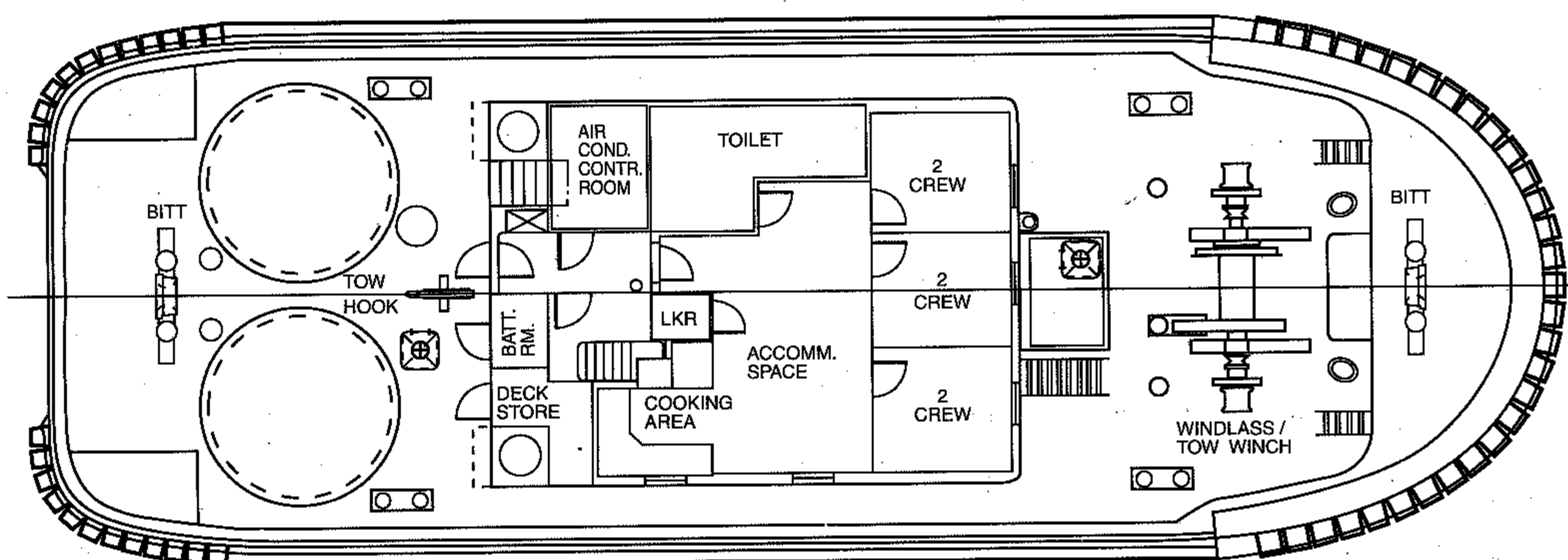
### PB Towage

7/F, Hutchison House, 10 Harcourt Road, Central, Hong Kong.

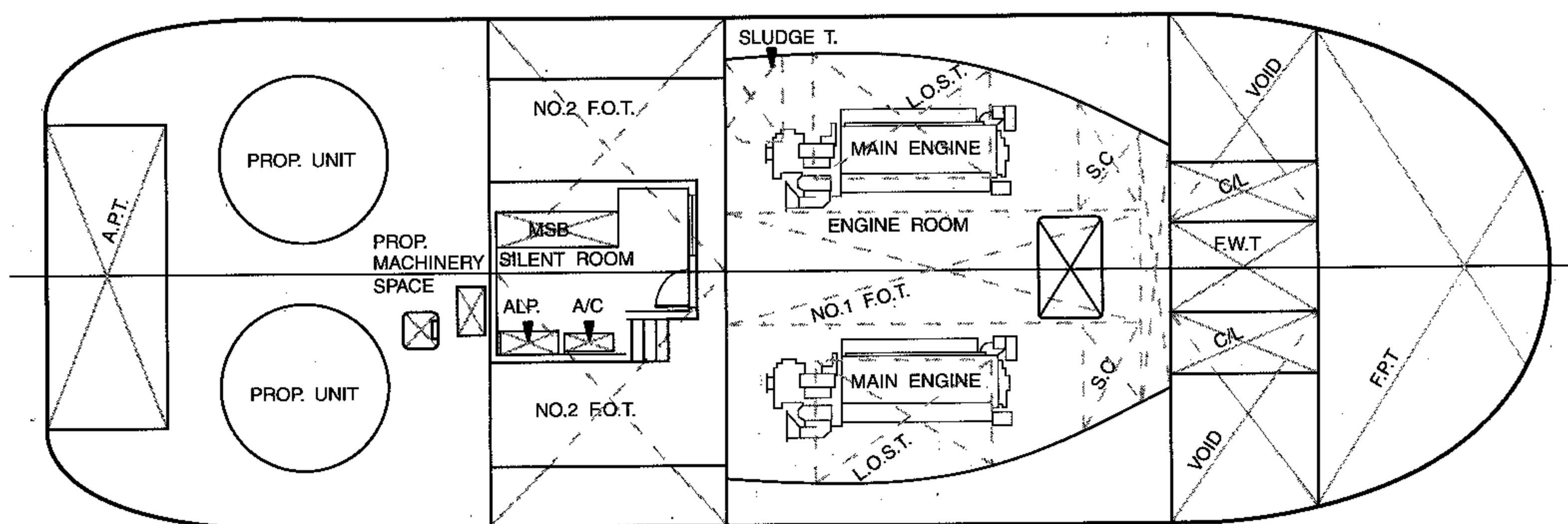
Tel: (+852) 2233 7000 E-mail: [pbtowage@pacificbasin.com](mailto:pbtowage@pacificbasin.com) Website: [www.pbtowage.com](http://www.pbtowage.com)



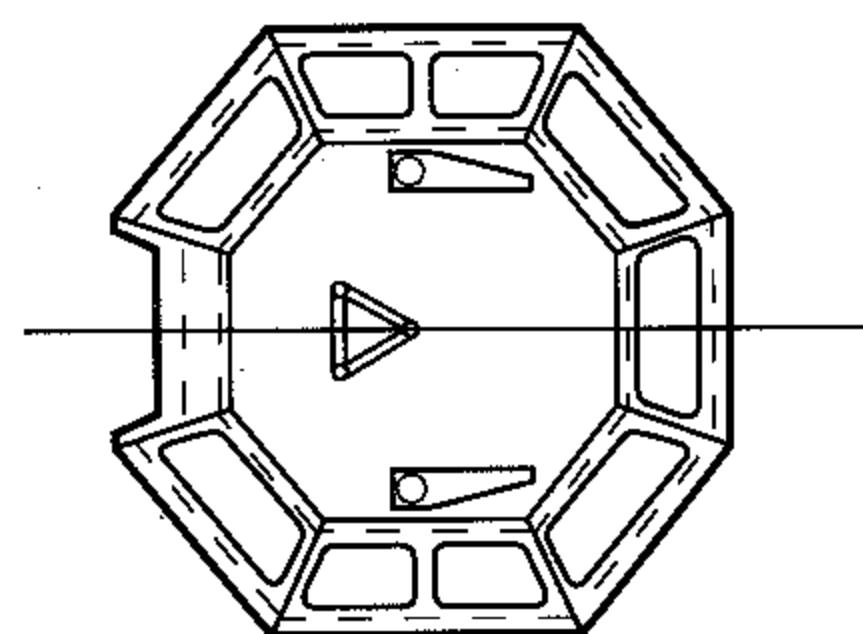
PROFILE



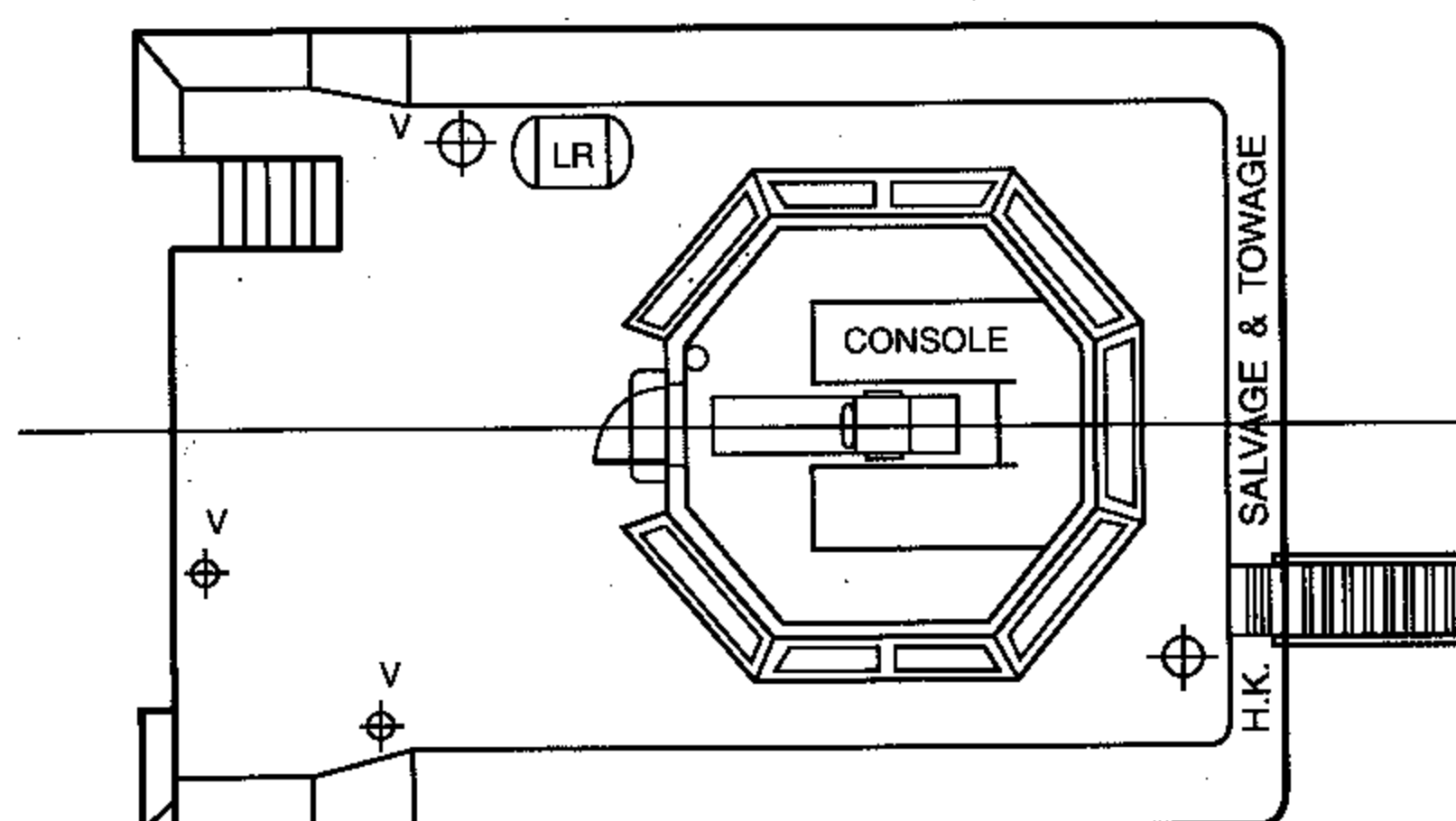
UPPER DECK PLAN



BOTTOM PLAN



WHEELHOUSE TOP  
(SHOWING PANORAMIC WINDOW LAY-OUT)



NAV. BRIDGE DECK  
(FOR ONE MAN BRIDGE OPERATION)